



Looking for Innovations?

**felo**

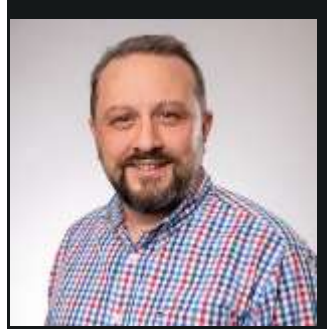
Since 1878



Andreas Siewert  
Managing Director



Alexander Reul  
Sales Director



Sabri Bilgin  
Financial & IT Director

**WELCOME TO FELO**

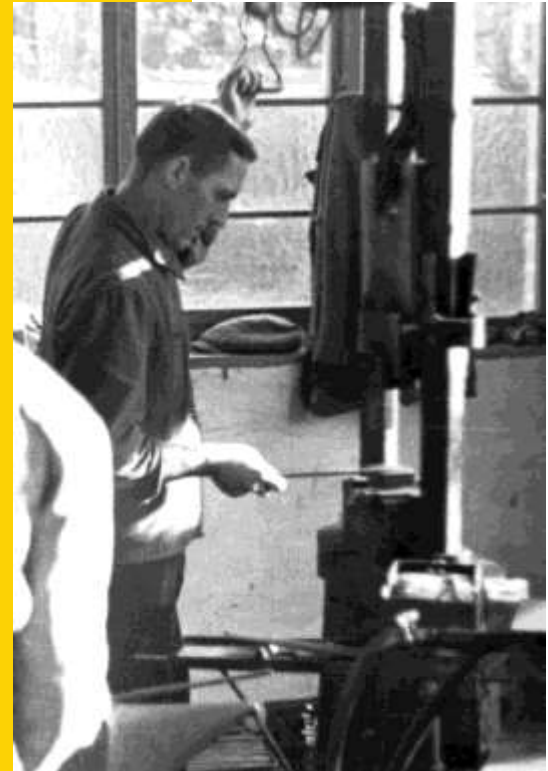
# MADE IN GERMANY QUALITY TOOLS SINCE 1878



*Hammermühle*

STEINBACH-HALLENBERG  
IN THURINGEN

WARENZEICHEN





# WE ARE FELO



**250 EMPLOYEES**

**60.000 BLADES/MONTH**

**1.000.000 SD/MONTH**

**1.000.000 BITS/MONTH**

**2.000 ITEMS**

**50 COUNTRIES**



**WE.  
ARE.  
GROWING.**





**FELO SZERSZAMGYAR KFT  
OUR FACTORY IN HUNGARY  
SINCE 1997**







Work Healthier.

**>felo**  
ergonic

**WORK WITH FELO**

**WORK HEALTHY**

**WORK SAFELY**





# OUR SCREWDRIVERS

HIGH QUALITY STEEL  
TORQUE  
HARDNESS  
DUCTILITY  
BLACK TIP

# SLOTTED SCREWDRIVER FIT

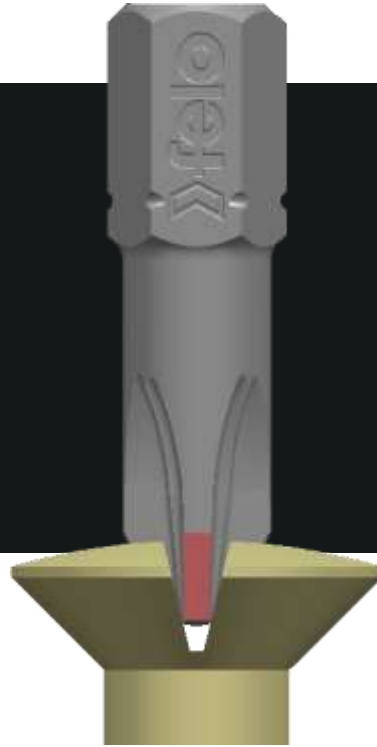


- DISTRIBUTED LOAD TRANSMISSION
- LEAST WEAR & TEAR OF TOOL AND SCREW
- HIGHEST SAFETY

- POINT LOAD TRANSMISSION
- DAMAGING SCREW & DRIVER
- HIGH RISK OF SLIPPAGE

THE BEST MATERIAL, PRECISION MACHINING & HEAT TREATMENT IS WORTH NOTHING IF THE TOOL IS MISUSED.

# PZ PH SCREWDRIVER FIT

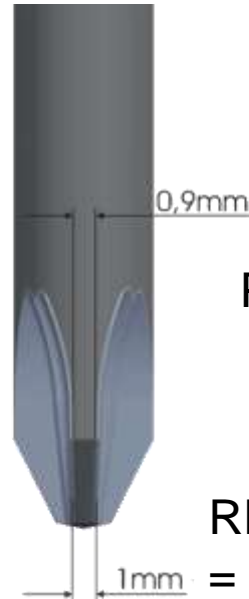


PZ SCREWDRIVER IN PH  
SCREW WILL RESULT IN  
DAMAGE TO SCREW AND  
DRIVER

THE BEST  
MATERIAL,  
PRECISION  
MACHINING &  
HEAT  
TREATMENT IS  
WORTH  
NOTHING IF  
THE TOOL IS  
MISUSED.

# BLACK TIP FOR PRECISION

100% SCREWDRIVER  
BODY = 100% TORQUE



PLATED SCREWDRIVER TIPS

REDUCED SCREWDRIVER-BODY  
= 10% LOSS IN TORQUE

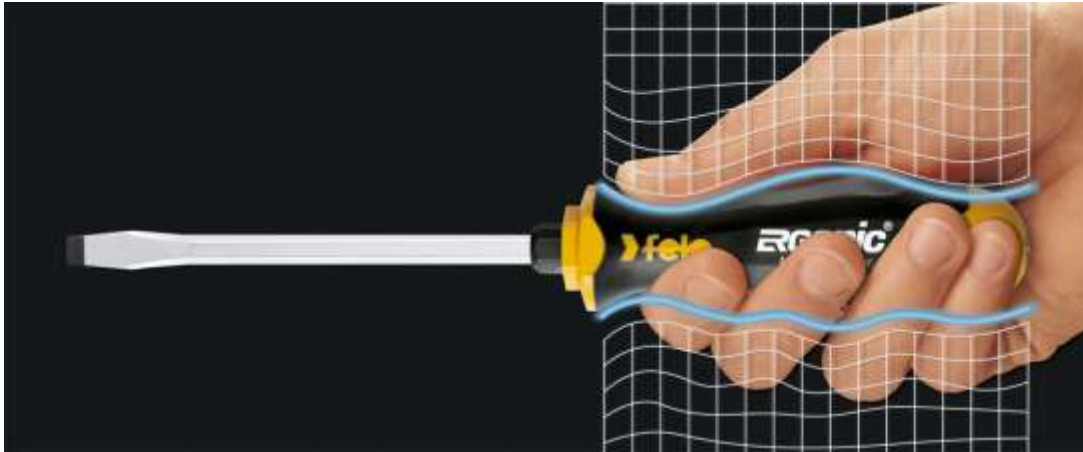


# OUR SCREWDRIVER RANGE



**felo**

**ERGonic**<sup>®</sup>  
PATENT EP 1963072



ERGONIC, THE FIRST HANDLE THAT  
ADAPTS TO THE USERS HAND

3-COMPONENT HANDLE OF  
HARDPLASTIC CORE, FLEXIBLE  
CUSHION AND NON-SLIP  
ELASTOMER



# ERGONIC<sup>®</sup>



ERGONIC HAMMER CAP

FULL LENGTH CHISEL BLADE

BLACK TIP FOR PRECISION FIT

BLADES CHROME-MOBYBDENUM-VANADIUM STEEL

HEXAGON BOLSTERS

ANTI ROLL HANDLE

PATENTED HANDLE

SCREW SYMBOLS ON CAP



# felo



Some things are hard to improve.  
We try anyway.

**ERGONIC**<sup>®</sup>

VDE

SAFETY FIRST.



**felo**



VDE-SLIM

VDE



# ERGONIC<sup>®</sup> K

Ratchet, pivoting screwdriver and  
ERGONIC handle in one tool

fast

strong

versatile



felo

---

# WORK RELAXED

With Smart solutions by Felo.



**felo**



**smart**<sup>®</sup>

No 9



ERGONOMIC  
DESIGN

2 – COMPONENT  
TECHNOLOGY

ANTI ROLL  
HANDLE

PREMIUM  
BLADES

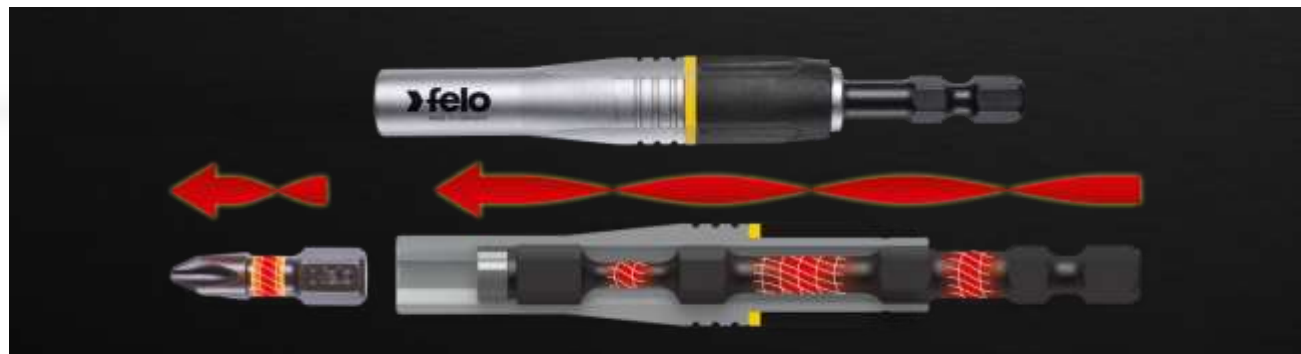
felo

No 9



VDE

# WORK WITH FELO STAR



# WORK WITH FELO IMPACT

# SERIES Nm

Nm TORQUE  
SCREWDRIVER WITH  
PRECISE  
ADJUSTMENT

EXCHANGEABLE  
BLADES FOR  
GREATEST  
FLEXIBILITY

PRECISE RELEASE  
INDICATED BY  
ACOUSTIC AND  
MECHANIC SIGNALS



---

# BITS KNOW-HOW



---

# OUR BIT RANGE

## BIT INDUSTRIAL

25-150 mm



## BIT IMPACT

25-50 mm



## BIT CHALLENGER

25-50 mm



## BIT TIN Plus

25-50 mm



# ALWAYS THE RIGHT DRIVE



C - drive



E-drive



A5,5



G7



C8



M5



10/32" NFA



# FELO QUALITY

HIGH QUALITY STEEL  
OPTIMIZED GEOMETRY

SHAPE STABILITY  
PRECISION

HARDNESS  
TORQUE



**felo**



# TIPS



WE HAVE THEM ALL  
AND MORE

# INDUSTRIAL



25 mm



50 mm



73 mm



100 mm



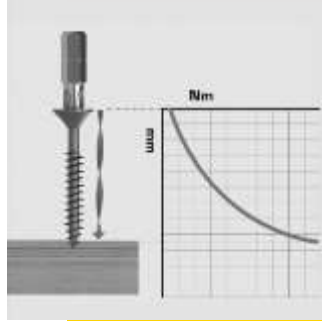
150 mm



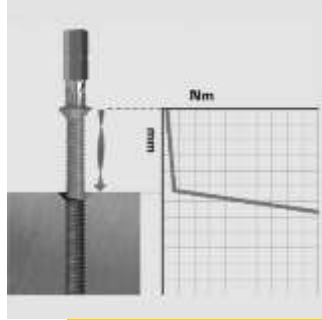
TIP



## IMPACT



HARD SCREW  
JOINT



SOFT SCREW  
JOINT

felo



25 mm



50 mm

**...MORE MEMBERS  
OF THE FELO FAMILY**



---

# MY TOOL INDIVIDUAL DESIGN



**felo**





**felo**

Wir sammeln Erfahrung seit 1878